

## Levelling sets

### Steel / Stainless Steel, short version

#### SPECIFICATION

##### Types

- Type **A**: without lock nut
- Type **AK**: with lock nut

##### Version in Steel

Steel, 1.7225 (42 CrMo 4V) **ST**  
zinc plated, blue passivated

##### Version in Stainless Steel

Stainless Steel AISI 303 **NI**  
(X 10 CrNiS 18-9)

F1: max. total load

F2: max. load after deduction of the max. preload

- for screws  $8.8 \mu = 0.125$  (Steel version)
- for screws  $6.8 \mu = 0.14$  (Stainless Steel version)



#### INFORMATION

Levelling sets GN 350.1 are used for levelling, adjusting and linking operations if small dimensions are given.

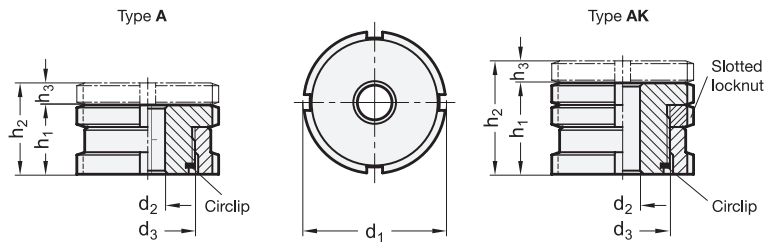
They comprise a threaded upper sleeve and a female threaded lower sleeve. The fine thread allows a stepless and precise setting and locking using the C-Spanner DIN 1810 (see page 994). A locking ring serves also as a height limiter for the max. height.

#### TECHNICAL INFORMATION

- Stainless Steel characteristics (see page A26)

#### ACCESSORY

- C-Spanner DIN 1810 (code no. see table)



#### GN 350.1

Description	d1	d2	d3	h1	h2	h3	For screw	Static load F in kN F1	Static load F in kN F2	Code no. for C-Spanner	
GN 350.1-25-6,6-A-ST	25	6,6	M 15 x 1	15	19	4	M 6	40	30,7	DIN 1810-A25-28	43
GN 350.1-32-6,6-A-ST	32	6,6	M 20 x 1	18	23	5	M 6	65	55,7	DIN 1810-A30-32	93
GN 350.1-32-9-A-ST	32	9	M 20 x 1	18	23	5	M 8	65	48	DIN 1810-A30-32	87
GN 350.1-32-11-A-ST	32	11	M 20 x 1	18	23	5	M 10	65	37,9	DIN 1810-A30-32	83
GN 350.1-45-11-A-ST	45	11	M 30 x 1,5	22	29	7	M 10	120	92,9	DIN 1810-A45-50	216
GN 350.1-45-13,5-A-ST	45	13,5	M 30 x 1,5	22	29	7	M 12	120	80,4	DIN 1810-A45-50	207
GN 350.1-45-17,5-A-ST	45	17,5	M 30 x 1,5	22	29	7	M 16	120	45,5	DIN 1810-A45-50	188
GN 350.1-58-17,5-A-ST	58	17,5	M 40 x 1,5	28	37	9	M 16	210	136	DIN 1810-A58-62	450
GN 350.1-58-22-A-ST	58	22	M 40 x 1,5	28	37	9	M 20	210	90	DIN 1810-A58-62	418
GN 350.1-58-26-A-ST	58	26	M 40 x 1,5	28	37	9	M 24	210	37	DIN 1810-A58-62	386
GN 350.1-70-22-A-ST	70	22	M 50 x 1,5	33	43	10	M 20	330	210	DIN 1810-A68-75	788
GN 350.1-70-26-A-ST	70	26	M 50 x 1,5	33	43	10	M 24	330	157	DIN 1810-A68-75	744
GN 350.1-70-33-A-ST	70	33	M 50 x 1,5	33	43	10	M 30	330	53	DIN 1810-A68-75	700
GN 350.1-80-26-A-ST	80	26	M 60 x 2	38	50	12	M 24	495	322	DIN 1810-A80-90	1135
GN 350.1-80-33-A-ST	80	33	M 60 x 2	38	50	12	M 30	495	218	DIN 1810-A80-90	1060
GN 350.1-80-39-A-ST	80	39	M 60 x 2	38	50	12	M 36	495	101	DIN 1810-A80-90	965



### GN 350.1

Description	d1	d2	d3	h1	h2	h3	For screw	Static load F in kN F1	Static load F in kN F2	Code no. for C-Spanner	⚖️
GN 350.1-25-6,6-AK-ST	25	6.6	M 15 x 1	20	24	4	M 6	40	30.7	DIN 1810-A25-28	58
GN 350.1-32-6,6-AK-ST	32	6.6	M 20 x 1	24	29	5	M 6	65	55.7	DIN 1810-A30-32	126
GN 350.1-32-9-AK-ST	32	9	M 20 x 1	24	29	5	M 8	65	48	DIN 1810-A30-32	118
GN 350.1-32-11-AK-ST	32	11	M 20 x 1	24	29	5	M 10	65	37.9	DIN 1810-A30-32	115
GN 350.1-45-11-AK-ST	45	11	M 30 x 1.5	29	36	7	M 10	120	92.9	DIN 1810-A45-50	318
GN 350.1-45-13,5-AK-ST	45	13.5	M 30 x 1.5	29	36	7	M 12	120	80.4	DIN 1810-A45-50	308
GN 350.1-45-17,5-AK-ST	45	17.5	M 30 x 1.5	29	36	7	M 16	120	45.5	DIN 1810-A45-50	254
GN 350.1-58-17,5-AK-ST	58	17.5	M 40 x 1.5	37	46	9	M 16	210	136	DIN 1810-A58-62	624
GN 350.1-58-22-AK-ST	58	22	M 40 x 1.5	37	46	9	M 20	210	90	DIN 1810-A58-62	620
GN 350.1-58-26-AK-ST	58	26	M 40 x 1.5	37	46	9	M 24	210	37	DIN 1810-A58-62	577
GN 350.1-70-22-AK-ST	70	22	M 50 x 1.5	44	54	10	M 20	330	210	DIN 1810-A68-75	1153
GN 350.1-70-26-AK-ST	70	26	M 50 x 1.5	44	54	10	M 24	330	157	DIN 1810-A68-75	1087
GN 350.1-70-33-AK-ST	70	33	M 50 x 1.5	44	54	10	M 30	330	53	DIN 1810-A68-75	974
GN 350.1-80-26-AK-ST	80	26	M 60 x 2	49	61	12	M 24	495	322	DIN 1810-A80-90	1565
GN 350.1-80-33-AK-ST	80	33	M 60 x 2	49	61	12	M 30	495	218	DIN 1810-A80-90	1440
GN 350.1-80-39-AK-ST	80	39	M 60 x 2	49	61	12	M 36	495	101	DIN 1810-A80-90	1314

### GN 350.1-NI

STAINLESS STEEL

Description	d1	d2	d3	h1	h2	h3	For screw	Static load F in kN F1	Static load F in kN F2	Code no. for C-Spanner	⚖️
GN 350.1-25-6,6-A-NI	25	6.6	M 15 x 1	15	19	4	M 6	27.1	20.2	DIN 1810-A25-28	43
GN 350.1-32-6,6-A-NI	32	6.6	M 20 x 1	18	23	5	M 6	43.4	36.5	DIN 1810-A30-32	93
GN 350.1-32-9-A-NI	32	9	M 20 x 1	18	23	5	M 8	43.4	30.8	DIN 1810-A30-32	87
GN 350.1-32-11-A-NI	32	11	M 20 x 1	18	23	5	M 10	43.4	23.4	DIN 1810-A30-32	60
GN 350.1-45-11-A-NI	45	11	M 30 x 1.5	22	29	7	M 10	84	64	DIN 1810-A45-50	216
GN 350.1-45-13,5-A-NI	45	13.5	M 30 x 1.5	22	29	7	M 12	84	54.8	DIN 1810-A45-50	207
GN 350.1-45-17,5-A-NI	45	17.5	M 30 x 1.5	22	29	7	M 16	84	28.9	DIN 1810-A45-50	188
GN 350.1-58-17,5-A-NI	58	17.5	M 40 x 1.5	28	37	9	M 16	148	92.9	DIN 1810-A58-62	450
GN 350.1-58-22-A-NI	58	22	M 40 x 1.5	28	37	9	M 20	148	59	DIN 1810-A58-62	418
GN 350.1-58-26-A-NI	58	26	M 40 x 1.5	28	37	9	M 24	148	20.3	DIN 1810-A58-62	386
GN 350.1-70-22-A-NI	70	22	M 50 x 1.5	33	43	10	M 20	225	136	DIN 1810-A68-75	788
GN 350.1-70-26-A-NI	70	26	M 50 x 1.5	33	43	10	M 24	225	97.3	DIN 1810-A68-75	744
GN 350.1-70-33-A-NI	70	33	M 50 x 1.5	33	43	10	M 30	225	20.6	DIN 1810-A68-75	668
GN 350.1-80-26-A-NI	80	26	M 60 x 2	38	50	12	M 24	323	195.3	DIN 1810-A80-90	1135
GN 350.1-80-33-A-NI	80	33	M 60 x 2	38	50	12	M 30	323	118.6	DIN 1810-A80-90	1060
GN 350.1-80-39-A-NI	80	39	M 60 x 2	38	50	12	M 36	323	38.2	DIN 1810-A80-90	965
GN 350.1-25-6,6-AK-NI	25	6.6	M 15 x 1	20	24	4	M 6	27.1	20.2	DIN 1810-A25-28	159
GN 350.1-32-6,6-AK-NI	32	6.6	M 20 x 1	24	29	5	M 6	43.4	36.5	DIN 1810-A30-32	128
GN 350.1-32-9-AK-NI	32	9	M 20 x 1	24	29	5	M 8	43.4	30.8	DIN 1810-A30-32	119
GN 350.1-32-11-AK-NI	32	11	M 20 x 1	24	29	5	M 10	43.4	23.4	DIN 1810-A30-32	114
GN 350.1-45-11-AK-NI	45	11	M 30 x 1.5	29	36	7	M 10	84	64	DIN 1810-A45-50	320
GN 350.1-45-13,5-AK-NI	45	13.5	M 30 x 1.5	29	36	7	M 12	84	54.8	DIN 1810-A45-50	209
GN 350.1-45-17,5-AK-NI	45	17.5	M 30 x 1.5	29	36	7	M 16	84	28.9	DIN 1810-A45-50	289
GN 350.1-58-17,5-AK-NI	58	17.5	M 40 x 1.5	37	46	9	M 16	148	92.9	DIN 1810-A58-62	665
GN 350.1-58-22-AK-NI	58	22	M 40 x 1.5	37	46	9	M 20	148	59	DIN 1810-A58-62	618
GN 350.1-58-26-AK-NI	58	26	M 40 x 1.5	37	46	9	M 24	148	20.3	DIN 1810-A58-62	574
GN 350.1-70-22-AK-NI	70	22	M 50 x 1.5	44	54	10	M 20	225	136	DIN 1810-A68-75	1123
GN 350.1-70-26-AK-NI	70	26	M 50 x 1.5	44	54	10	M 24	225	97.3	DIN 1810-A68-75	1069
GN 350.1-70-33-AK-NI	70	33	M 50 x 1.5	44	54	10	M 30	225	20.6	DIN 1810-A68-75	756
GN 350.1-80-26-AK-NI	80	26	M 60 x 2	49	61	12	M 24	323	195.3	DIN 1810-A80-90	1565
GN 350.1-80-33-AK-NI	80	33	M 60 x 2	49	61	12	M 30	323	118.6	DIN 1810-A80-90	1440
GN 350.1-80-39-AK-NI	80	39	M 60 x 2	49	61	12	M 36	323	38.2	DIN 1810-A80-90	1310

